

DAWSON

Cooper façade



Flinders façade



Lachlan façade



Nepean façade



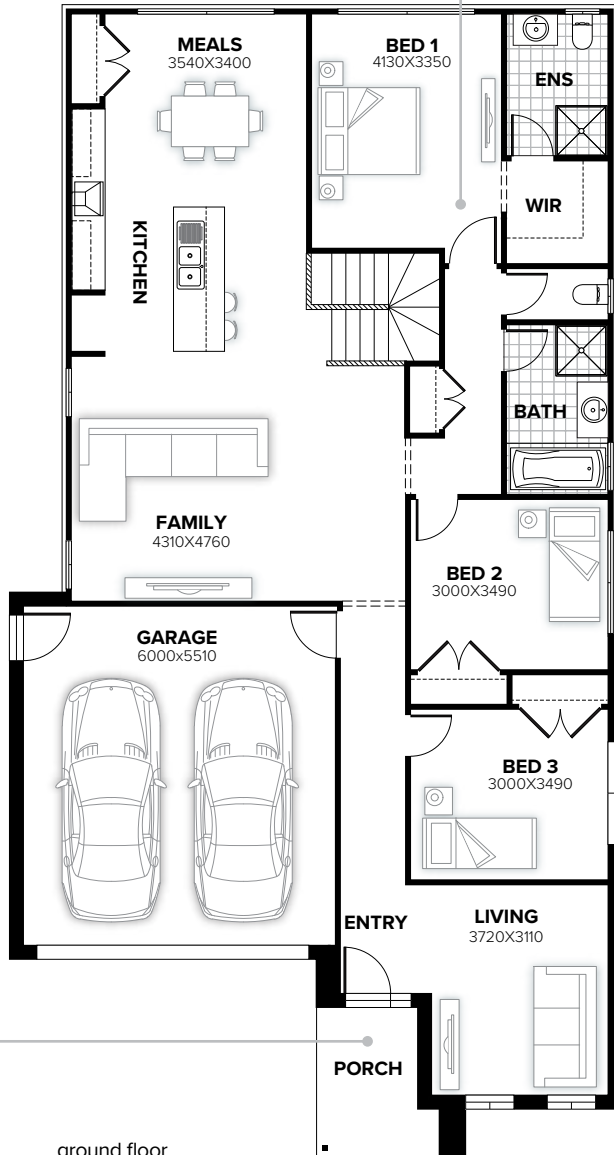
DAWSON 250

4 3 1 2

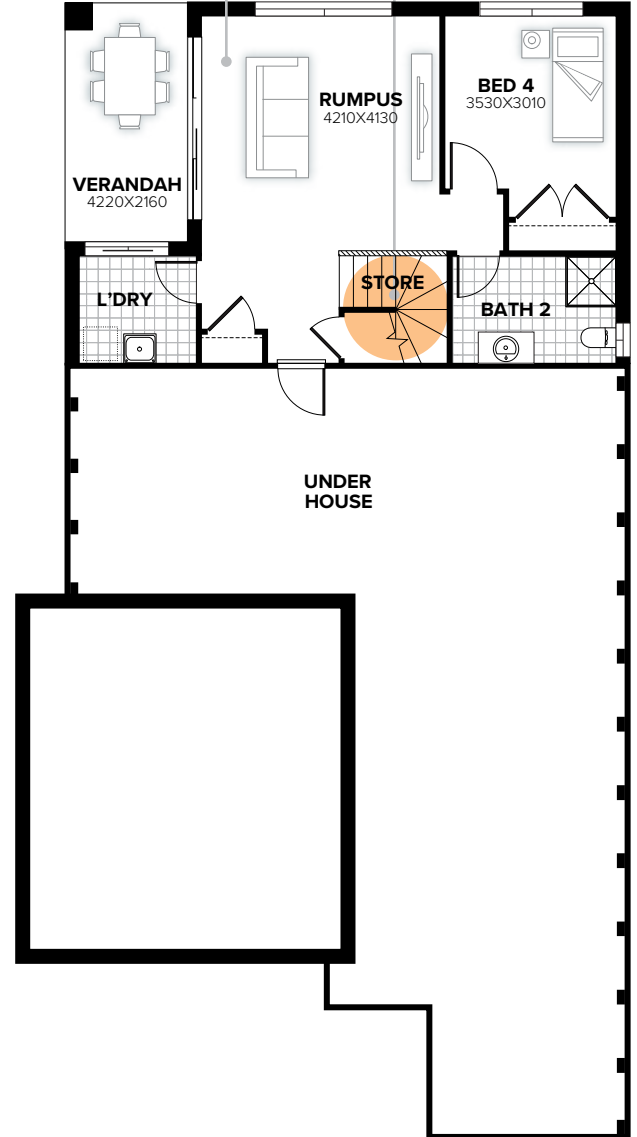
your own private oasis

ideal for guests

split level design



ground floor



basement

FLOORPLAN OPTIONS

Want to put a personal touch on your home? Speak to your New Home Consultant about the exciting range of ready-to-go design options for this floorplan.

Popular design options include:

- Kitchen option
- Ensuite upgrade
- Laundry option
- WIP option

home width	10.79m
home length	20.24m

residence	198.98sqm	21.42sq
alfresco	9.12sqm	0.98sq
porch	5.45sqm	0.59sq
garage	35.98sqm	3.87sq
total	249.53sqm	26.86sq

Listed details based on Lachlan façade floorplan (illustrated)

Call 13 BURBANK Visit burbank.com.au

Burbank 
#noplacelikehome

*Copyright conditions. All photos and illustrations are representative only. Floor plans and specifications may be varied by Burbank without notice, the dimensions are diagrammatic only and a Building Contract with final drawings will display correct dimensions and detail. All designs are the property of Burbank and must not be used, reproduced, copied or varied, wholly or in part without written permission from an authorised Burbank representative. Copyright Burbank Australia (NSW) Pty Ltd. ABN 88 610 822 870. NSW BL 295627C. ACT BL 2016566.

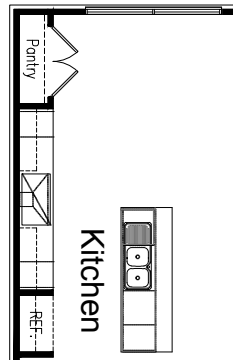
FLOORPLAN OPTIONS

DAWSON 250



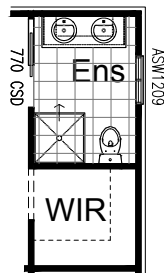
OPTION K1

Provide Kitchen Upgrade including 900mm appliances, 900mm open shelf above Ref. space, 2No. 700mm base cabinets, 2No. 400mm base cabinets & 2No. 350mm overhead cabinets in lieu of standard.



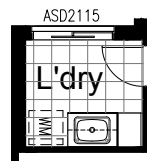
OPTION ENS1

Provide Ensuite upgrade option including increase Ensuite by 100mm and reduce WIR, provide 720mm flush panel cavity sliding door in lieu of standard, 1482 vanity unit with double bowls and 1200x850mm single glazed aluminium sliding window in lieu of standard.



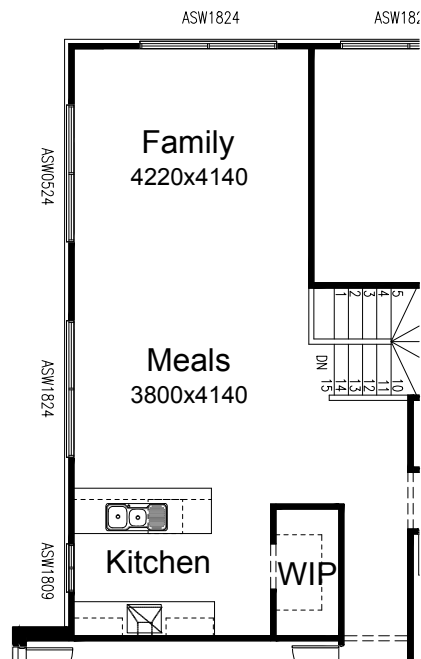
OPTION LD1

Provide Laundry upgrade with insert trough, 1no. 800mm base cupboard, 1no. 800mm overhead cupboard, 1No. 400mm broom cupboard unit and additional tiled splash back and bench top to suit.



OPTION IP1

Provide alternate floor plan layout including relocate Kitchen to Family area and provide WIP with 4No. 450mm and 300mm shelves. Provide 1800x2410mm aluminium sliding window to Meals, 514x2410mm aluminium window to Family and 1800x850mm aluminium window to Kitchen in lieu of standard. Provide alternate Kitchen layout including 2No. 900mm base cabinets, 1No. 450mm base cabinet, 1No. 800mm base cabinet, 1No. 450mm four drawer bank, dishwasher provision, 2No. 800mm overhead cabinets and 600mm appliances as per standard.



Call 13 BURBANK Visit burbank.com.au

Burbank 
#noplacelikehome

*Copyright conditions. All photos and illustrations are representative only. Floor plans and specifications may be varied by Burbank without notice, the dimensions are diagrammatic only and a Building Contract with final drawings will display correct dimensions and detail. All designs are the property of Burbank and must not be used, reproduced, copied or varied, wholly or in part without written permission from an authorised Burbank representative. Copyright Burbank Australia (NSW) Pty Ltd. ABN 88 610 822 870. NSW BL 295627C. ACT BL 2016566.